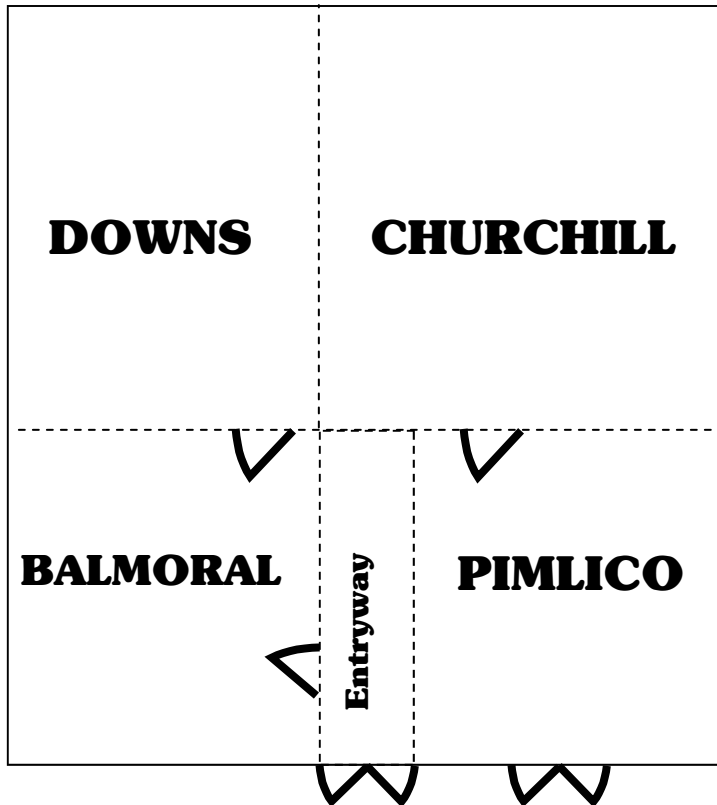


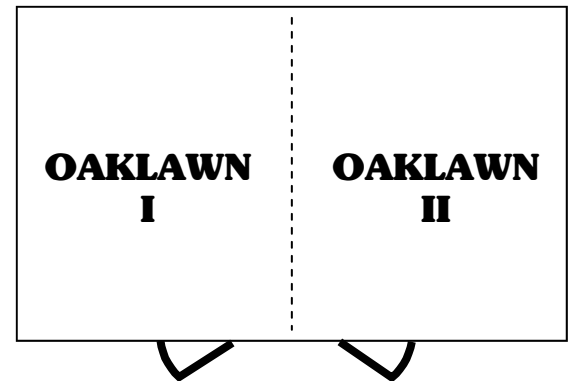
BANQUET, MEETING, CONVENTION AND CONFERENCE FACILITIES

TRIPLE CROWN BALLROOM



BOSSIER CITY

OAKLAWN



ROOM	DIMENSIONS	SQ.FT.	CEILING HEIGHT	THEATER	ROUNDS	CLASS-ROOM	RECEPTION
TRIPLE CROWN	90X60	5400	9'6"	375	350	200	500
CHURCHILL & DOWNS	52X60	3120	9'6"	205	150	120	150
CHURCHILL	33X52	1716	9'6"	150	85	75	100
DOWNS	57X52	1404	9'6"	125	80	50	100
BALMORAL	27X36	972	9'6"	75	65	45	75
PIMLICO	27X36	972	9'6"	75	65	45	75
OAKLAWN	23X44	1012	9'6"	90	65	50	75
OAKLAWN I	23X22	506	9'6"	40	30	20	30
OAKLAWN II	23X22	506	9'6"	40	30	20	30

SIX CONFERENCE ROOMS 6,400 SQ.FT.

- 1 large 5,400 sq. ft. that can be divided into 4 rooms
- 1 small room (1,012 sq. ft. that can be divided into 2 rooms
- Rheostat dimmer switch for inset ceiling lights
- Daytime fluorescent lighting

EQUIPMENT AND SERVICES AVAILABLE

- Electrical outlets—110/220 Volts
- Service Elevator - 5'5" x 6'11", 37.5 sq. ft., 2,500lb. limit
- Portable Dance Floor
- Built in P.A. system
- Podium—standing and tabletop
- American and Louisiana Flags
- Flip Chart Pad
- Audio Visual equipment (rental)
- Tables—70 rounds and 8' rectangles
- Stage/ Risers—6 sections of 6' x 8', 8" high
- Skirted tables for exhibits
- High Speed Internet Access
- Built In 5x5 screen and chalkboard in each room
- Data Projector